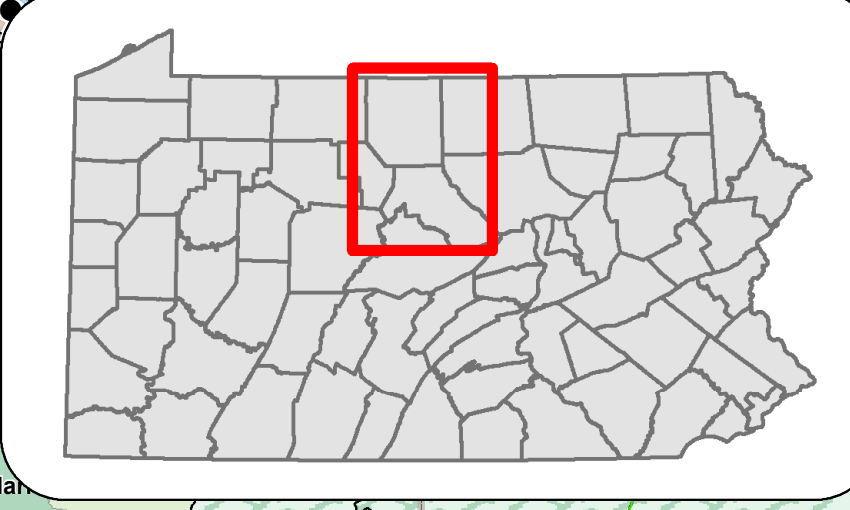
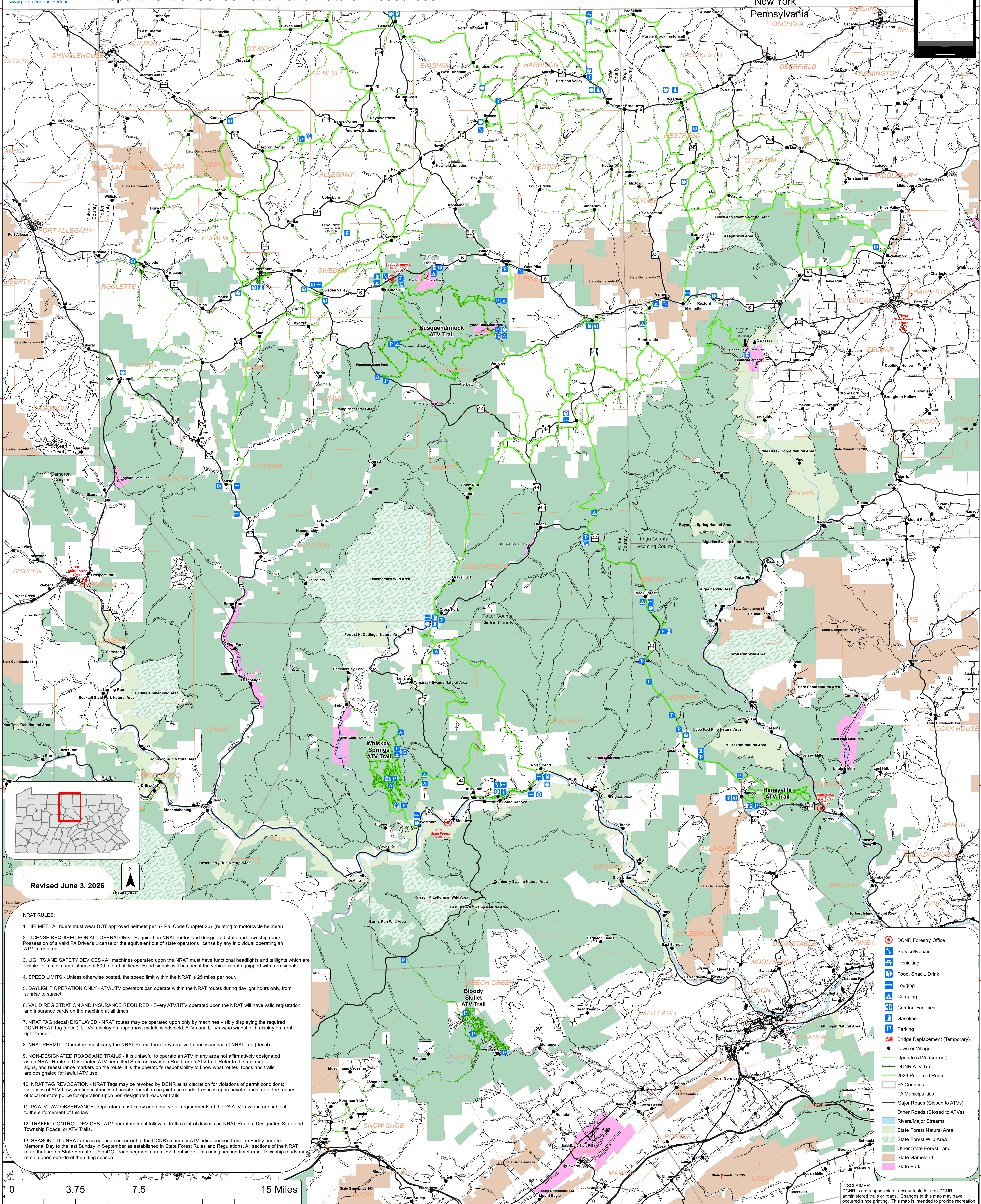
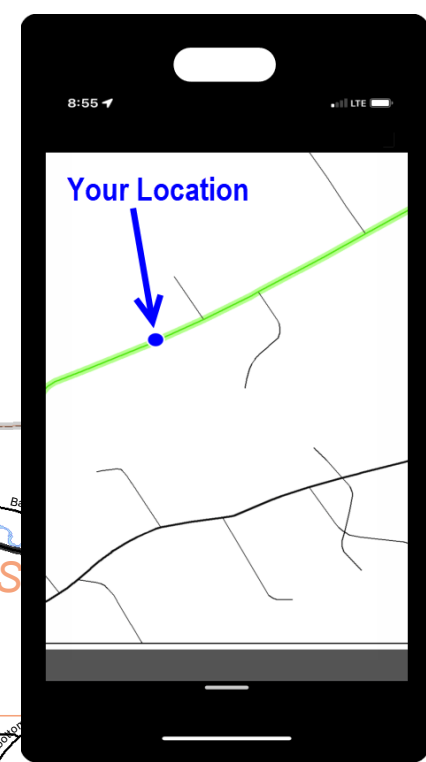




Northcentral Regional ATV Trail (2026)

PA Department of Conservation and Natural Resources

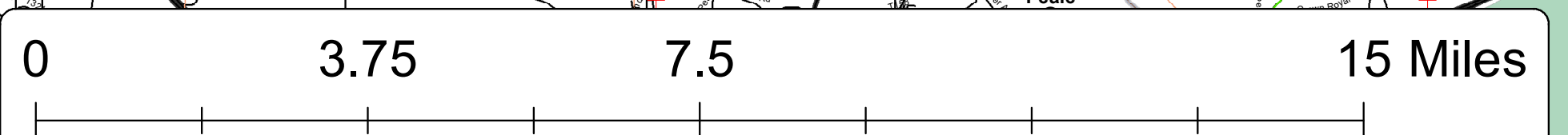
A geo-pdf of this map is available at <https://www.dcnr.pa.gov/NCRATV> or by scanning the QR Code to the right. Geo-pdfs can be imported into apps on mobile devices. Many apps will display your GPS location on the map and will work offline in areas without cellular coverage.



Revised June 3, 2026

- NRAT RULES:**
- HELMET** - All riders must wear DOT approved helmets per 67 Pa. Code Chapter 207 (relating to motorcycle helmets).
 - LICENSE REQUIRED FOR ALL OPERATORS** - Required on NRAT routes and designated state and township roads. Possession of a valid PA Driver's License or the equivalent out of state operator's license by any individual operating an ATV is required.
 - LIGHTS AND SAFETY DEVICES** - All machines operated upon the NRAT must have functional headlights and taillights which are visible for a minimum distance of 500 feet at all times. Hand signals will be used if the vehicle is not equipped with turn signals.
 - SPEED LIMITS** - Unless otherwise posted, the speed limit within the NRAT is 25 miles per hour.
 - DAYLIGHT OPERATION ONLY** - ATV/UTV operators can operate within the NRAT routes during daylight hours only, from sunrise to sunset.
 - VALID REGISTRATION AND INSURANCE REQUIRED** - Every ATV/UTV operated upon the NRAT will have valid registration and insurance cards on the machine at all times.
 - NRAT TAG (DECAL) DISPLAYED** - NRAT routes may be operated upon only by machines visibly displaying the required DCNR NRAT Tag (decal). UTVs: display on uppermost middle windshield. ATVs and UTVs who windshield: display on front right fender.
 - NRAT PERMIT** - Operators must carry the NRAT Permit form they received upon issuance of NRAT Tag (decal).
 - NON-DESIGNATED ROADS AND TRAILS** - It is unlawful to operate an ATV in any area not affirmatively designated as an NRAT Route, a Designated ATV-permitted State or Township Road, or an ATV Trail. Refer to the trail map, signs, and reassurance markers on the route. It is the operator's responsibility to know what routes, roads and trails are designated for lawful ATV use.
 - NRAT TAG REVOCATION** - NRAT Tags may be revoked by DCNR at its discretion for violations of permit conditions; violations of ATV Law; verified instances of unsafe operation on joint-use roads, trespass upon private lands, or at the request of local or state police for operation upon non-designated roads or trails.
 - PA ATV LAW OBSERVANCE** - Operators must know and observe all requirements of the PA ATV Law and are subject to the enforcement of this law.
 - TRAFFIC CONTROL DEVICES** - ATV operators must follow all traffic control devices on NRAT Routes, Designated State and Township Roads, or ATV Trails.
 - SEASON** - The NRAT area is opened concurrent to the DCNR's summer ATV riding season from the Friday prior to Memorial Day to the last Sunday in September as established in State Forest Rules and Regulations. All sections of the NRAT route that are on State Forest or PennDOT road segments are closed outside of this riding season timeframe. Township roads may remain open outside of the riding season.

- DCNR Forestry Office
- Service/Repair
- Picnicking
- Food, Snack, Drink
- Lodging
- Camping
- Comfort Facilities
- Gasoline
- Parking
- Bridge Replacement (Temporary)
- Town or Village
- Open to ATVs (current)
- DCNR ATV Trail
- 2026 Preferred Route
- PA Counties
- PA Municipalities
- Major Roads (Closed to ATVs)
- Other Roads (Closed to ATVs)
- Rivers/Major Streams
- State Forest Natural Area
- State Forest Wild Area
- Other State Forest Land
- State Gameland
- State Park



DISCLAIMER: DCNR is not responsible or accountable for non-DCNR administered trails or roads. Changes to this map may have occurred since printing. This map is intended to provide recreation locations and is not an official transportation map.